



Brooking Close, Dagenham, RM8 2GS

£400,000



Brooking Close, Dagenham, RM8 2GS

£400,000

Barrain London introduces this spacious family home featuring two double bedrooms, a large bright reception (opening onto a patio), and a separate integrated galley style kitchen. Ideal for first time buyers, this property has several important other qualities including a drive, a garden – and it's ready to be moved into – the condition is outstanding.

NO ONWARD CHAIN, so get moved in fast!

Located between Becontree (District Line) and Chadwell Heath (Elizabeth Line) underground stations, the property enjoys quick access to the Greater London via the Elizabeth and District Lines. Commute to the City, shop at Westfield Stratford, or be out to a West End in less than an hour!

For families with school age children, there are several excellent local primary schools including Becontree Primary and The Erkenwald Centre. Besides good schools, LIDL, Barking hospital are close by, as is the Islamic Cultural Centre and Masjid.

Excellent value! This is a great opportunity for first time buyers, buy to let investors and anyone downsizing from a larger property. Please call in to arrange a viewing today.

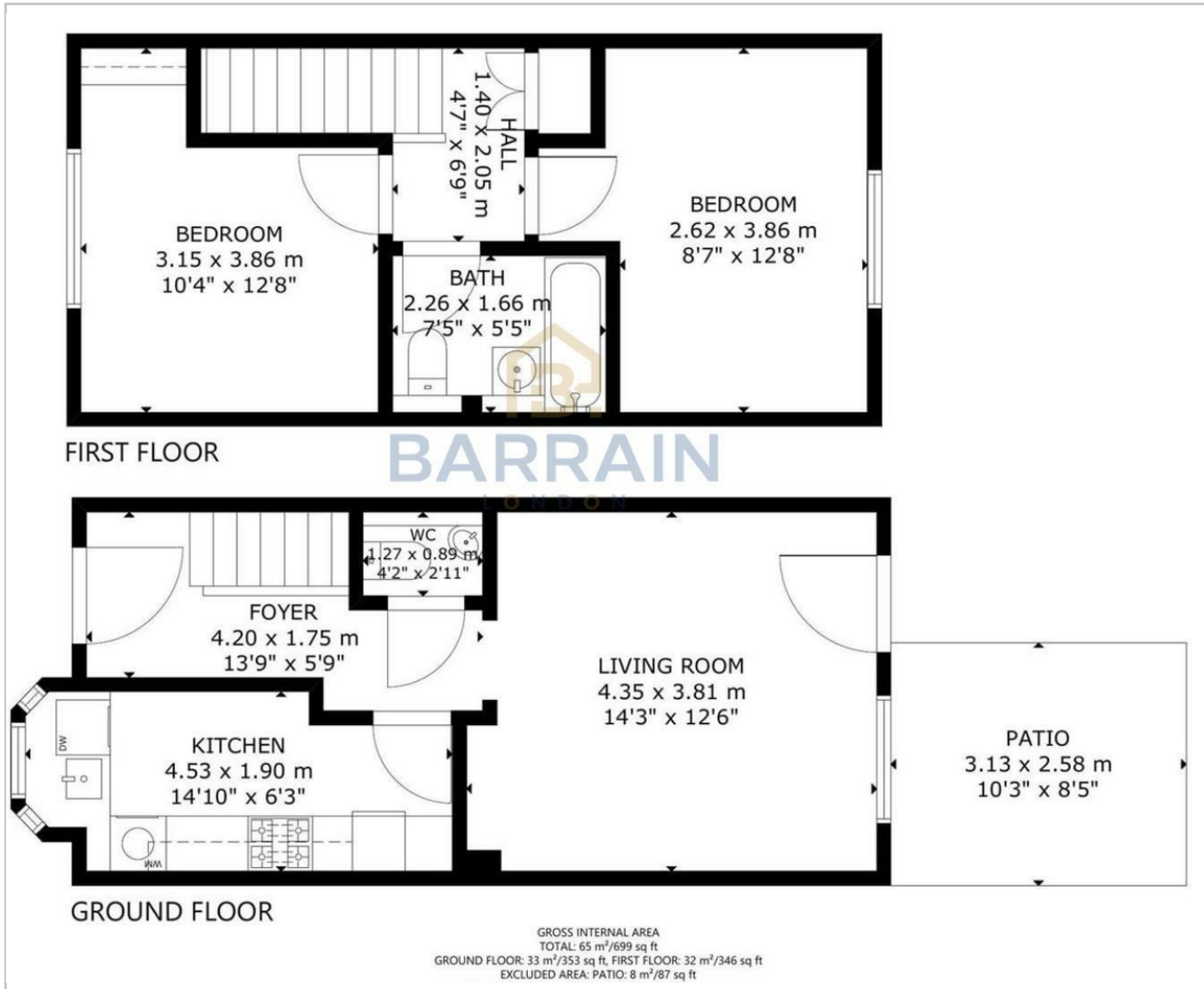
Key Features

- Two double bedroom House in excellent condition
- Separate kitchen
- Private garden
- Drive
- Great links: Elizabeth line (Chadwell Heath station) & District Line (Beacontree station)
- Excellent local schools
- Local to LIDL, Longbridge Centre (Masjid) , St Thomas More Church, & Goodmayes Park

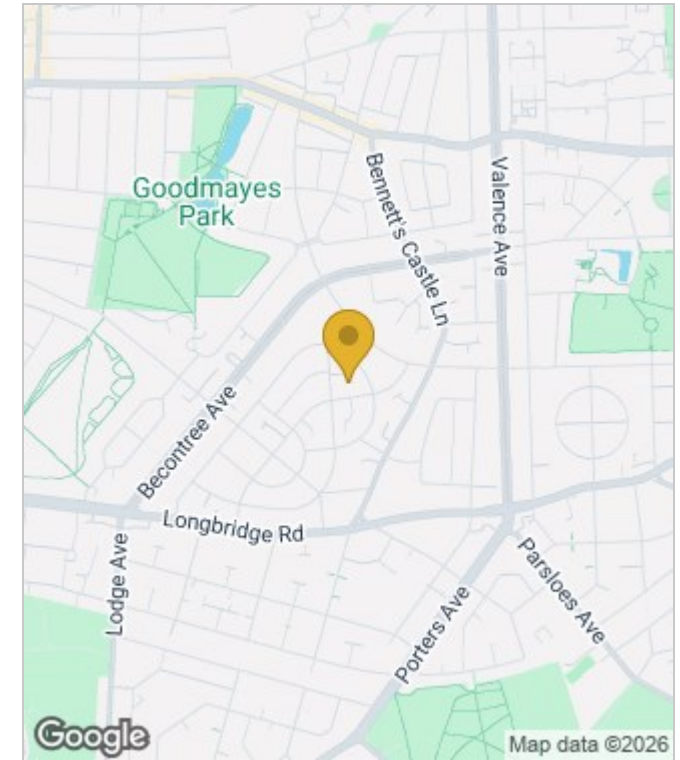


Council Tax Band: C

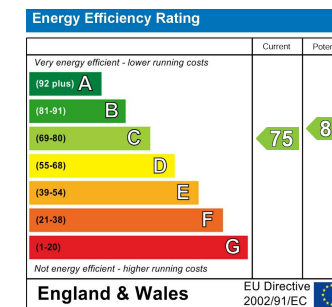
Floor Plans



Area Map



Energy Performance Graph



These particulars, whilst believed to be accurate are set out as a general outline only for guidance and do not constitute any part of an offer or contract. Intending purchasers should not rely on them as statements of representation of fact, but must satisfy themselves by inspection or otherwise as to their accuracy. No person in this firm's employment has the authority to make or give any representation or warranty in respect of the property.